



tantulus eco outdoor



pureWhite





TECHNICAL DATASHEET

tantulus eco outdoor

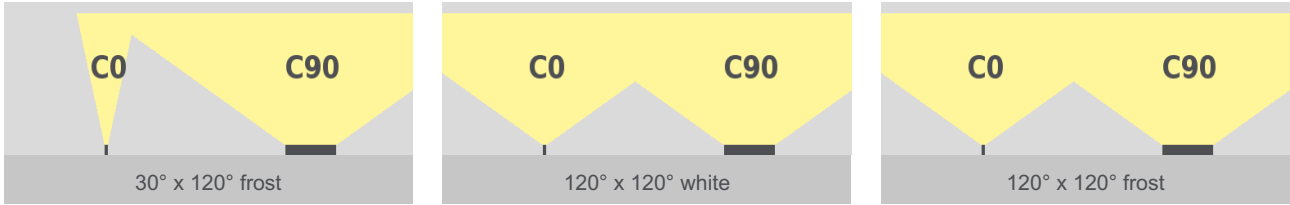
pureWhite

Technical Data

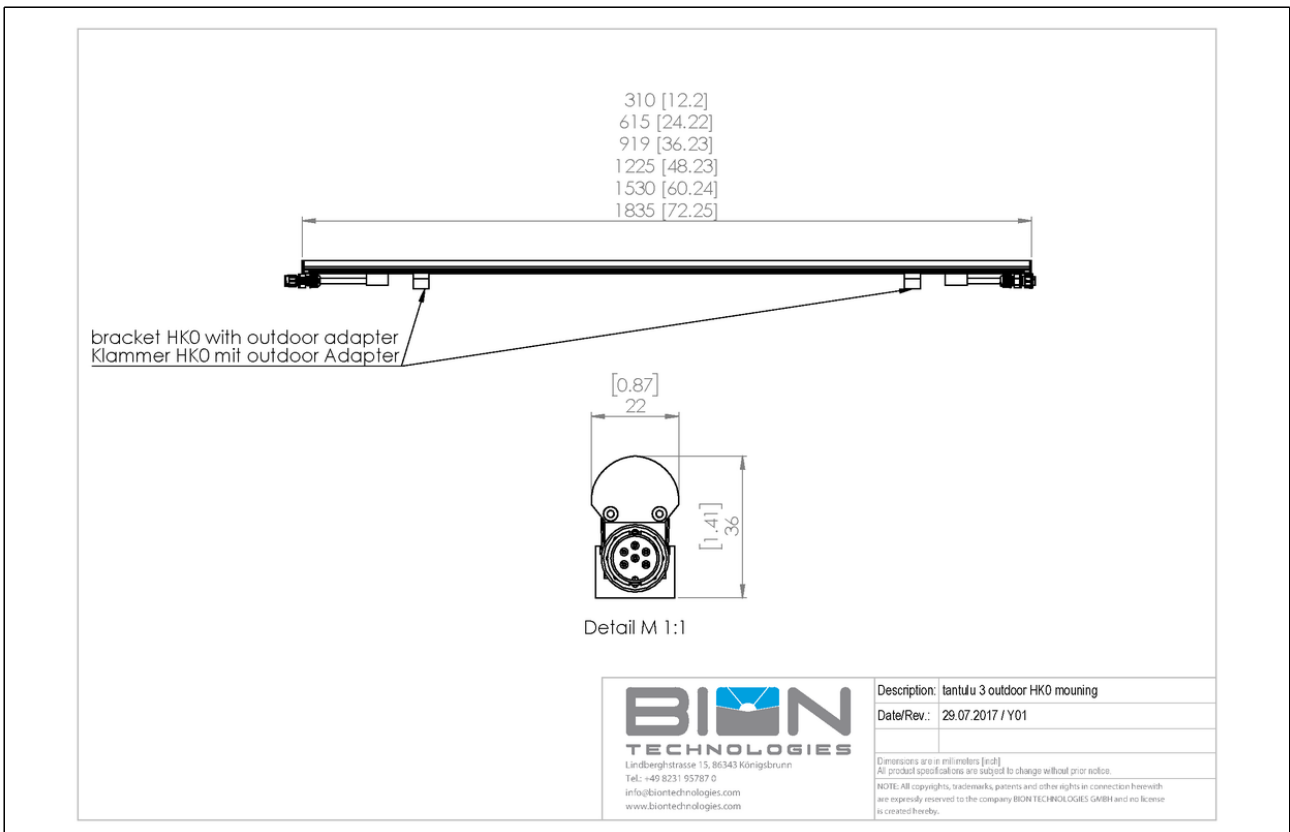
Dimensions	22 mm x 36 mm [W x H] with bracket / hinge 0.87 in x 1.42 in [W x H] with bracket / hinge		
Standard Unit Lengths	310 mm, 615 mm, 920 mm, 1225 mm, 1530 mm, 1835 mm 12.21 in, 24.22 in, 36.23 in, 48.23 in, 60.24 in, 72.25 in		
Fixture Typ	 pureWhite		
Color Temperatures pureWhite	2600 K, 3300 K, 4000 K, 4400 K, 5400 K * Project-specific color temperature for pureWhite available.		
Beam Angles	30° x 120°, 120°, 120°		
Luminous Flux	310 mm (12.21 in):	615 mm (24.22 in):	920 mm (36.23 in):
	1225 mm (48.23 in):	1530 mm (60.24 in):	1835 mm (72.25 in):
	150 lm	300 lm	450 lm
	600 lm	750 lm	900 lm
Light Source	310 mm (12.21 in):	615 mm (24.22 in):	920 mm (36.23 in):
	1225 mm (48.23 in):	1530 mm (60.24 in):	1835 mm (72.25 in):
	10 LEDs	20 LEDs	30 LEDs
	40 LEDs	50 LEDs	60 LEDs
Color Rendering Index	R _a >= 80		
R9	20		
LED-Binning			
MacAdam Ellipses Binning	2		
Dimming	external		

Input Voltage	Power supply: external 36 VDC	
Power Consumption	310 mm (12.21 in):	Max. 3 W
	615 mm (24.22 in):	Max. 6 W
	920 mm (36.23 in):	Max. 9 W
	1225 mm (48.23 in):	Max. 12 W
	1530 mm (60.24 in):	Max. 15 W
	1835 mm (72.25 in):	Max. 18 W
Protection Class	II	
Storage Temperatur	-20 °C / +40 °C -4 °F / +104 °F	
Operating Temperature	-20 °C / +40 °C -4 °F / +104 °F	
Start-up Temperature	-20 °C / +40 °C -4 °F / +104 °F	
Lumen Maintenance [L70]	40'000 h @ 25 °C (77 °F) 25'000 h @ 50 °C (122 °F)	
LED-Class	Class 2 LED Product	
Housing	Aluminium	
Housing Color(s)	 Aluminium anodized (Standard)	
Lens	Material: PMMA	
	Translucency	
	frost	89%
	white	70%
Ingress Protection	IP65	
Environment	 indoor  outdoor	
Certification		

Beam Angles



Engineering Drawing



Project	Fixture#	Date
		Firm

Ordering Information

Choose the option that suits your needs and write its corresponding code on the appropriate line to form the product code.

TAN-OUT-ECO- _____ - _____ - _____ - _____ - Y31

TYP - LUMINOUS
COLOR

FIXTURE LENGTH

BEAM ANGLE

MOUNTING
OPTION

TYP - LUMINOUS COLOR	
PW26	pureWhite - 2600 K
PW33	pureWhite - 3300 K
PW40	pureWhite - 4000 K
PW44	pureWhite - 4400 K
PW54	pureWhite - 5400 K

MOUNTING OPTION	
K0	Bracket Set 0°
K15	Bracket Set 15°
K30	Bracket Set 30°
K45	Bracket Set 45°
K60	Bracket Set 60°
KADJ	Positioning Hinge
Fixed Angle: Bracket count: 2 <= 1225 mm (48.23 in) > 3 HKadj: Bracket count: 2 for all lengths	

FIXTURE LENGTH	
310	310 mm / 12.2 in
615	615 mm / 24.21 in
920	920 mm / 36.22 in
1225	1225 mm / 48.23 in
1530	1530 mm / 60.24 in
1835	1835 mm / 72.24 in

BEAM ANGLE	
30X120F	30° x 120° frost
120X120W	120° x 120° white
120X120F	120° x 120° frost

* Project-specific options are available - Please contact our Sales Representative for further information.



Lindberghstrasse 15
86343 Koenigsbrunn
Tel: +49 (0)8231/95787-0
Fax: +49 (0)8231/95787-29
www.biontechnologies.com
info@biontechnologies.com

YouTube: <http://www.youtube.com/user/BIONTECHNOLOGIES>

© 2021, BION TECHNOLOGIS GMBH
All rights reserved / Subject to change / Specifications may change without notice