



tantulus outdoor



RGBW

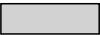



TECHNISCHES DATENBLATT

tantulus outdoor

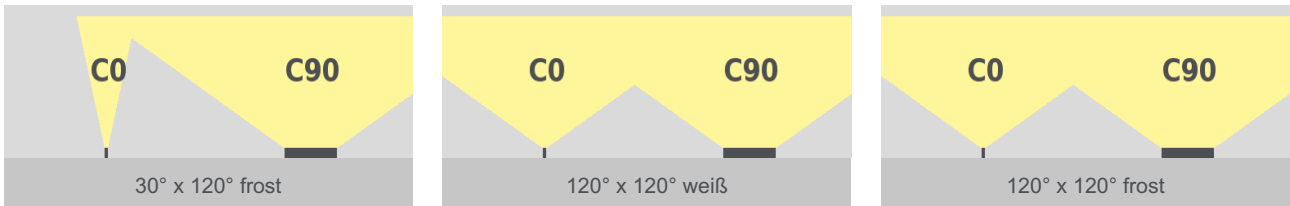
RGBW

Technische Daten

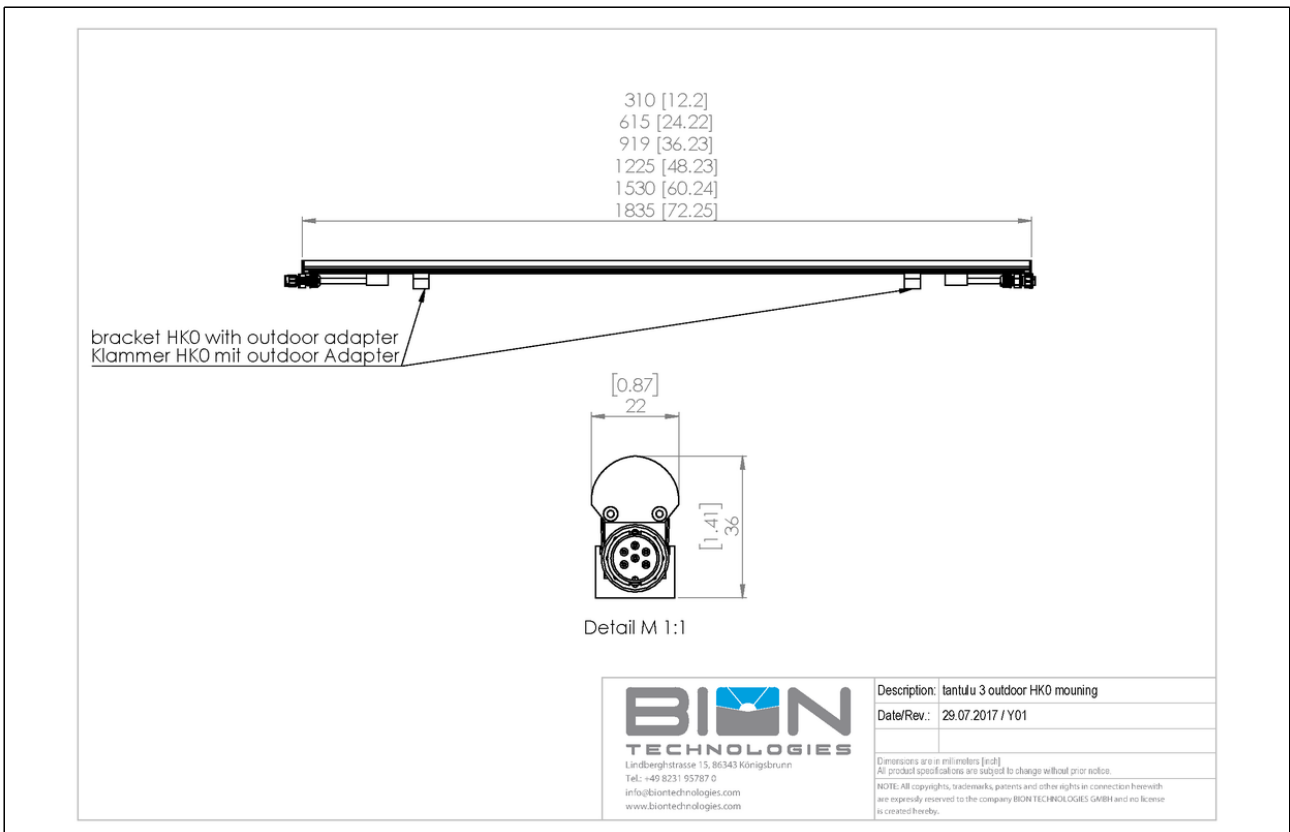
Abmessungen	22 mm x 36 mm [B x H] mit Halteklammer / Schanier 0.87 in x 1.42 in [B x H] mit Halteklammer / Schanier																																																					
Leuchtenlängen	210 mm, 310 mm, 415 mm, 515 mm, 615 mm, 720 mm, 820 mm, 920 mm, 1025 mm, 1125 mm, 1225 mm, 1330 mm, 1430 mm, 1530 mm, 1635 mm, 1735 mm, 1835 mm 8.27 in, 12.21 in, 16.34 in, 20.28 in, 24.22 in, 28.35 in, 32.29 in, 36.23 in, 40.36 in, 44.30 in, 48.23 in, 52.37 in, 56.30 in, 60.24 in, 64.37 in, 68.31 in, 72.25 in																																																					
Leuchtentyp	 RGBW																																																					
Farbtemperaturen W-Kanal	2600 K, 3300 K, 4000 K * Projektbezogene LED-Farben für RGBW/RGB möglich.																																																					
Abstrahlwinkel	30° x 120°, 120°, 120°																																																					
Lichtstrom	<table><tr><td>210 mm</td><td>(8.27 in):</td><td>147 lm</td></tr><tr><td>310 mm</td><td>(12.21 in):</td><td>223 lm</td></tr><tr><td>415 mm</td><td>(16.34 in):</td><td>297 lm</td></tr><tr><td>515 mm</td><td>(20.28 in):</td><td>370 lm</td></tr><tr><td>615 mm</td><td>(24.22 in):</td><td>446 lm</td></tr><tr><td>720 mm</td><td>(28.35 in):</td><td>520 lm</td></tr><tr><td>820 mm</td><td>(32.29 in):</td><td>593 lm</td></tr><tr><td>920 mm</td><td>(36.23 in):</td><td>669 lm</td></tr><tr><td>1025 mm</td><td>(40.36 in):</td><td>743 lm</td></tr><tr><td>1125 mm</td><td>(44.3 in):</td><td>816 lm</td></tr><tr><td>1225 mm</td><td>(48.23 in):</td><td>892 lm</td></tr><tr><td>1330 mm</td><td>(52.37 in):</td><td>966 lm</td></tr><tr><td>1430 mm</td><td>(56.3 in):</td><td>1039 lm</td></tr><tr><td>1530 mm</td><td>(60.24 in):</td><td>1115 lm</td></tr><tr><td>1635 mm</td><td>(64.37 in):</td><td>1189 lm</td></tr><tr><td>1735 mm</td><td>(68.31 in):</td><td>1262 lm</td></tr><tr><td>1835 mm</td><td>(72.25 in):</td><td>1338 lm</td></tr></table>			210 mm	(8.27 in):	147 lm	310 mm	(12.21 in):	223 lm	415 mm	(16.34 in):	297 lm	515 mm	(20.28 in):	370 lm	615 mm	(24.22 in):	446 lm	720 mm	(28.35 in):	520 lm	820 mm	(32.29 in):	593 lm	920 mm	(36.23 in):	669 lm	1025 mm	(40.36 in):	743 lm	1125 mm	(44.3 in):	816 lm	1225 mm	(48.23 in):	892 lm	1330 mm	(52.37 in):	966 lm	1430 mm	(56.3 in):	1039 lm	1530 mm	(60.24 in):	1115 lm	1635 mm	(64.37 in):	1189 lm	1735 mm	(68.31 in):	1262 lm	1835 mm	(72.25 in):	1338 lm
210 mm	(8.27 in):	147 lm																																																				
310 mm	(12.21 in):	223 lm																																																				
415 mm	(16.34 in):	297 lm																																																				
515 mm	(20.28 in):	370 lm																																																				
615 mm	(24.22 in):	446 lm																																																				
720 mm	(28.35 in):	520 lm																																																				
820 mm	(32.29 in):	593 lm																																																				
920 mm	(36.23 in):	669 lm																																																				
1025 mm	(40.36 in):	743 lm																																																				
1125 mm	(44.3 in):	816 lm																																																				
1225 mm	(48.23 in):	892 lm																																																				
1330 mm	(52.37 in):	966 lm																																																				
1430 mm	(56.3 in):	1039 lm																																																				
1530 mm	(60.24 in):	1115 lm																																																				
1635 mm	(64.37 in):	1189 lm																																																				
1735 mm	(68.31 in):	1262 lm																																																				
1835 mm	(72.25 in):	1338 lm																																																				
Lichtquelle	<table><tr><td>210 mm</td><td>(8.27 in):</td><td>13 LEDs</td></tr><tr><td>310 mm</td><td>(12.21 in):</td><td>20 LEDs</td></tr><tr><td>415 mm</td><td>(16.34 in):</td><td>27 LEDs</td></tr><tr><td>515 mm</td><td>(20.28 in):</td><td>33 LEDs</td></tr><tr><td>615 mm</td><td>(24.22 in):</td><td>40 LEDs</td></tr><tr><td>720 mm</td><td>(28.35 in):</td><td>47 LEDs</td></tr><tr><td>820 mm</td><td>(32.29 in):</td><td>53 LEDs</td></tr><tr><td>920 mm</td><td>(36.23 in):</td><td>60 LEDs</td></tr><tr><td>1025 mm</td><td>(40.36 in):</td><td>67 LEDs</td></tr><tr><td>1125 mm</td><td>(44.3 in):</td><td>73 LEDs</td></tr><tr><td>1225 mm</td><td>(48.23 in):</td><td>80 LEDs</td></tr><tr><td>1330 mm</td><td>(52.37 in):</td><td>87 LEDs</td></tr><tr><td>1430 mm</td><td>(56.3 in):</td><td>93 LEDs</td></tr><tr><td>1530 mm</td><td>(60.24 in):</td><td>100 LEDs</td></tr><tr><td>1635 mm</td><td>(64.37 in):</td><td>107 LEDs</td></tr><tr><td>1735 mm</td><td>(68.31 in):</td><td>113 LEDs</td></tr><tr><td>1835 mm</td><td>(72.25 in):</td><td>120 LEDs</td></tr></table>			210 mm	(8.27 in):	13 LEDs	310 mm	(12.21 in):	20 LEDs	415 mm	(16.34 in):	27 LEDs	515 mm	(20.28 in):	33 LEDs	615 mm	(24.22 in):	40 LEDs	720 mm	(28.35 in):	47 LEDs	820 mm	(32.29 in):	53 LEDs	920 mm	(36.23 in):	60 LEDs	1025 mm	(40.36 in):	67 LEDs	1125 mm	(44.3 in):	73 LEDs	1225 mm	(48.23 in):	80 LEDs	1330 mm	(52.37 in):	87 LEDs	1430 mm	(56.3 in):	93 LEDs	1530 mm	(60.24 in):	100 LEDs	1635 mm	(64.37 in):	107 LEDs	1735 mm	(68.31 in):	113 LEDs	1835 mm	(72.25 in):	120 LEDs
210 mm	(8.27 in):	13 LEDs																																																				
310 mm	(12.21 in):	20 LEDs																																																				
415 mm	(16.34 in):	27 LEDs																																																				
515 mm	(20.28 in):	33 LEDs																																																				
615 mm	(24.22 in):	40 LEDs																																																				
720 mm	(28.35 in):	47 LEDs																																																				
820 mm	(32.29 in):	53 LEDs																																																				
920 mm	(36.23 in):	60 LEDs																																																				
1025 mm	(40.36 in):	67 LEDs																																																				
1125 mm	(44.3 in):	73 LEDs																																																				
1225 mm	(48.23 in):	80 LEDs																																																				
1330 mm	(52.37 in):	87 LEDs																																																				
1430 mm	(56.3 in):	93 LEDs																																																				
1530 mm	(60.24 in):	100 LEDs																																																				
1635 mm	(64.37 in):	107 LEDs																																																				
1735 mm	(68.31 in):	113 LEDs																																																				
1835 mm	(72.25 in):	120 LEDs																																																				
Farbwiedergabeindex	R _a >= 82																																																					
R9	20																																																					
LED-Binning																																																						
MacAdam-Ellipsen Binning	3																																																					

Eingangsspannung	Netzteil: extern					
Wirkleistungsaufnahme	210 mm (8.27 in): Max. 6 W 310 mm (12.21 in): Max. 6 W 415 mm (16.34 in): Max. 12 W 515 mm (20.28 in): Max. 12 W 615 mm (24.22 in): Max. 12 W 720 mm (28.35 in): Max. 18 W 820 mm (32.29 in): Max. 18 W 920 mm (36.23 in): Max. 18 W 1025 mm (40.36 in): Max. 24 W 1125 mm (44.3 in): Max. 24 W 1225 mm (48.23 in): Max. 24 W 1330 mm (52.37 in): Max. 30 W 1430 mm (56.3 in): Max. 30 W 1530 mm (60.24 in): Max. 30 W 1635 mm (64.37 in): Max. 36 W 1735 mm (68.31 in): Max. 36 W 1835 mm (72.25 in): Max. 36 W					
Schutzklasse	II					
Lagertemperatur	-20 °C / +40 °C -4 °F / +104 °F					
Betriebstemperatur	-20 °C / +40 °C -4 °F / +104 °F					
Einschalttemperatur	-20 °C / +40 °C -4 °F / +104 °F					
Lebensdauer [L70]	40'000 h @ 25 °C (77 °F) 25'000 h @ 50 °C (122 °F)					
LED-Klasse	Klasse 2 LED Produkt					
Gehäuse	Aluminium					
Gehäusefarbe(n)	 Aluminium natur eloxiert (Standard)					
Linse	Material: PMMA Transluzenzgrad: <table border="0"> <tr> <td>frost</td> <td>89%</td> </tr> <tr> <td>weiß</td> <td>70%</td> </tr> </table>		frost	89%	weiß	70%
frost	89%					
weiß	70%					
Schutzart	IP65					
Umgebung	 indoor  outdoor					
Zulassungen						

Abstrahlwinkel



Technische Zeichnung



Projekt	Leuchten#	Datum
		Firma



Bestellinformationen

Wählen Sie Ihre Wunschkonfiguration aus und schreiben Sie dann die Kodierung in das entsprechende Feld, um somit die Produktnummer zu erstellen.

TAN-OUT-- _____ - _____ - _____ - _____ - Y31

TYP - LICHTFARBE	LEUCHTENLÄNGE	ABSTRAHLUNG	BEFESTIGUNGSOPTION
RGBW26 RGBW - 2600 K RGBW33 RGBW - 3300 K RGBW40 RGBW - 4000 K	210 210 mm / 8.27 in 310 310 mm / 12.2 in 415 415 mm / 16.34 in 515 515 mm / 20.28 in 615 615 mm / 24.21 in 720 720 mm / 28.35 in 820 820 mm / 32.28 in 920 920 mm / 36.22 in 1025 1025 mm / 40.35 in 1125 1125 mm / 44.29 in 1225 1225 mm / 48.23 in 1330 1330 mm / 52.36 in 1430 1430 mm / 56.3 in 1530 1530 mm / 60.24 in 1635 1635 mm / 64.37 in 1735 1735 mm / 68.31 in 1835 1835 mm / 72.24 in	30X120F 30° x 120° frost 120X120W 120° x 120° weiß 120X120F 120° x 120° frost	K0 Halteklammerset 0° K15 Halteklammerset 15° K30 Halteklammerset 30° K45 Halteklammerset 45° K60 Halteklammerset 60° KADJ Friktionsscharnier Feste Winkel: Klammeranzahl: 2 <= 1225 mm (48.23 in) > 3 HKadj: Klammeranzahl: 2 für alle Längen

* Projektbezogene Optionen sind verfügbar - Bitte kontaktieren Sie Ihren Ansprechpartner für weitere Informationen.



Lindberghstrasse 15
86343 Koenigsbrunn
Tel: +49 (0)8231/95787-0
Fax: +49 (0)8231/95787-29
www.biontechnologies.com
info@biontechnologies.com

YouTube: <http://www.youtube.com/user/BIONTECHNOLOGIES>

© 2021, BION TECHNOLOGIS GMBH
All rights reserved / Subject to change / Specifications may change without notice