

murus m
RGBW_{quad}

TECHNICAL DATASHEET

murus m

RGBWquad

Technical Data

Dimensions 130 mm x 150 mm x 170 mm [B x T x H]
5.12 in x 5.91 in x 6.69 in [L x B x H]

Fixture Typ



RGBWquad

Color Temperatures W-Channel 3000 K, 4000 K
* Project-specific LED-colors for RGBW/RGB available.

Luminous Flux 600 lm
Constant Current max. 500 mA

Color Rendering Index $R_a \geq 80$

LED-Binning



MacAdam Ellipses Binning 3

Control DALI, 0 - 10 V, DMX, TRIAC, POT, IOT

Input Voltage

Optionally internal / external

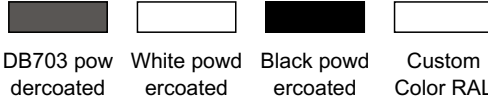
Power Consumption

Max. 7 W

Housing

Aluminum die casting

Housing Color(s)



Ingress Protection

IP66

Environment



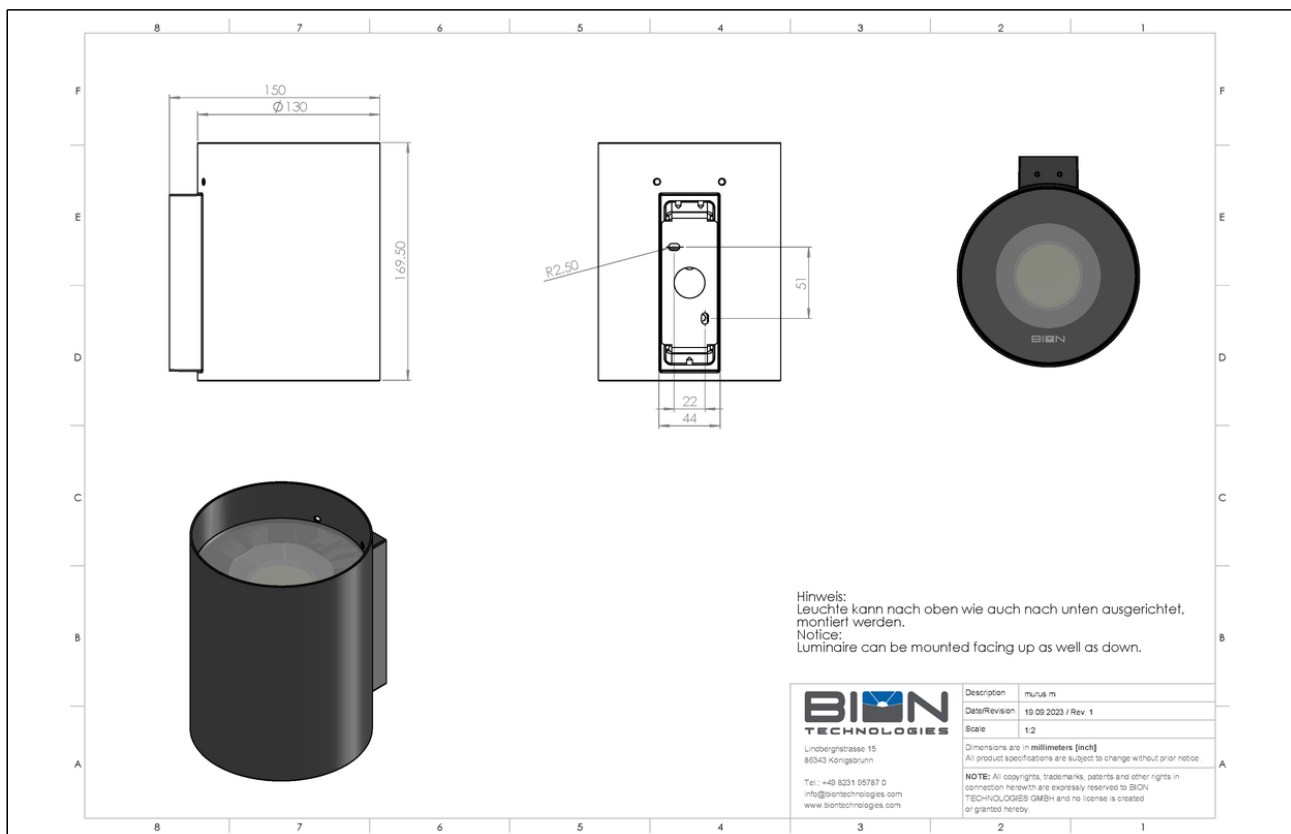
Impact Protection

IK08

Certification



Engineering Drawing





Lindberghstrasse 15
86343 Koenigsbrunn
Tel: +49 (0)8231/95787-0
Fax: +49 (0)8231/95787-29
www.biontechnologies.com
info@biontechnologies.com

YouTube: <http://www.youtube.com/user/BIONTECHNOLOGIES>